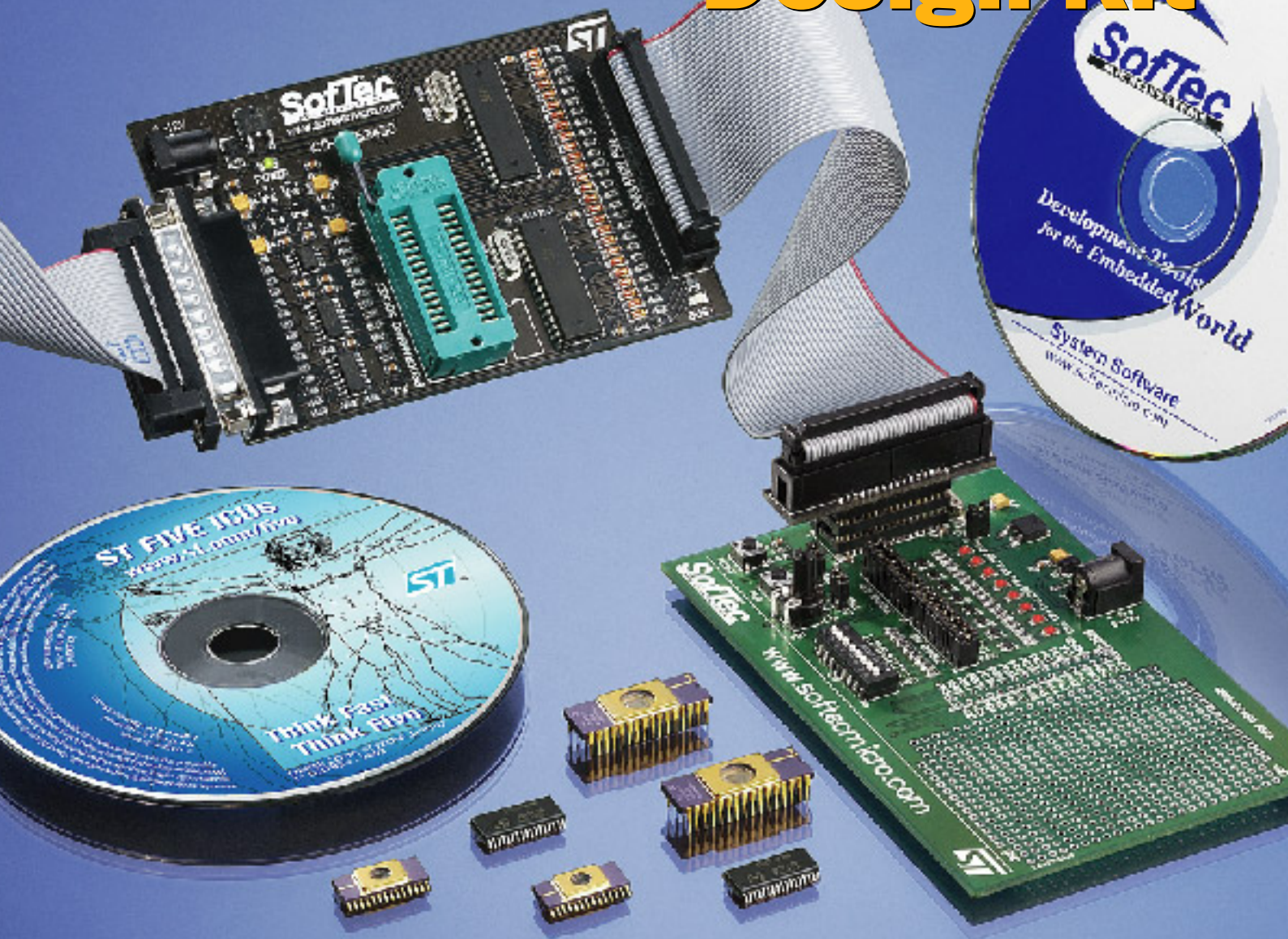


**SofTec**<sup>®</sup>  
MICROSYSTEMS

*Development Tools  
for the Embedded World*

# ST FIVE Design Kit



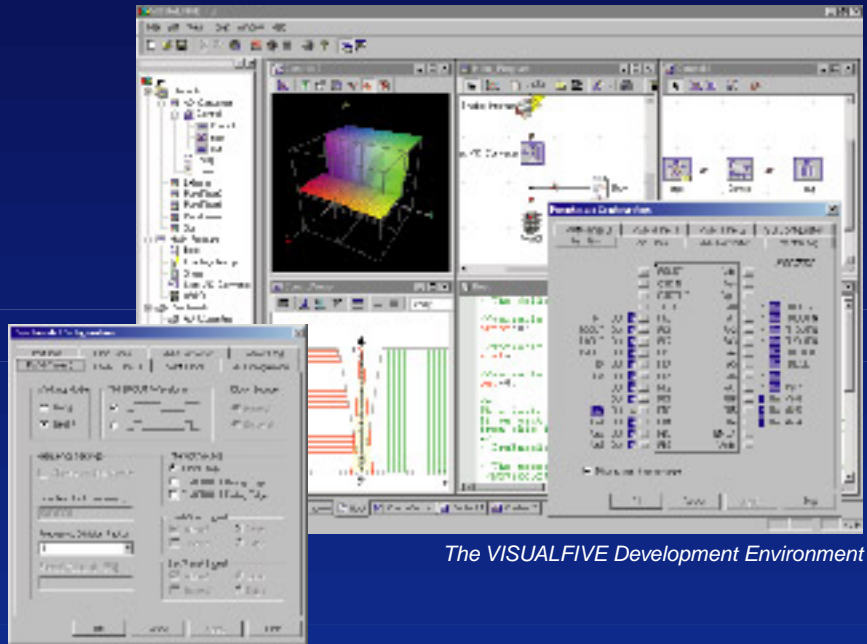
- VISUALFIVE Development Environment
- AFM Fuzzy Modeller
- In-Circuit Emulator/Programmer
- Full-Featured Evaluation Board
- Device Sample
- Documentation/Device Data Sheets



# ST FIVE Design Kit

## VISUALFIVE Features

- Full integrated IDE for Assembly, C and visual programming
- Graphical peripheral configuration
- Design your project flow chart
- Graphical development of fuzzy algorithms
- AFM modeller to support your decision-based models
- High-level debugger
- Device programmer
- Minimize code writing and develop time
- Focus on your control and systemistic aspect



The VISUALFIVE Development Environment

## Emulation/Debugging Features

- True in-circuit emulation
- Full I/O and peripheral simulation
- Emulation pod included
- Step-by-step execution modes
- Breakpoint handling
- Tracing of the source program
- Read/Write memory and registers
- LPT Connection

## Programming Features

- Full-featured programming utility included
- ZIF socket for easy device insertion and extraction

The FIVE Design Kit provides you with everything you need to write, compile, program, in-circuit emulate and debug user code for STMicroelectronics ST FIVE family of Intelligent Controller Units. The FIVE Design Kit includes the VISUALFIVE development environment, an in-circuit emulation/programmer module and a full-featured experiment board. In-circuit emulation allows you to use the actual inputs and outputs of your target system during simulation of your code.

Free software upgrades at  
[www.softecmicro.com](http://www.softecmicro.com)

| Order Code  | Devices Supported | Device Sample (Included) | Emulation POD (Included) | Emu/Prog Unit | Experiment Board |
|-------------|-------------------|--------------------------|--------------------------|---------------|------------------|
| ICD-ST52420 | ST52X410/420      | ST52E420G2D              | DIP-28                   | ●             | ●                |
| ICD-ST52430 | ST52X430          | ST52E430K3D              | SDIP-32                  | ●             | ●                |
| ICD-ST52440 | ST52X400/440      | ST52E440G3D              | DIP-28                   | ●             | ●                |

DC00452

# THINK FAST, THINK FIVE!

